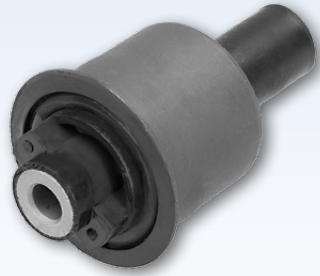




MEYLE[®]
Products



MEYLE no.	Reference no.
Bushing: 014 033 0086/HD	202 330 19 07*
	202 330 49 07*
	210 330 87 07*
	210 330 88 07*

Control arm: 016 050 2103/HD	202 330 48 07
016 050 2104/HD	202 330 49 07





*"Part of" - MEYLE part is only a component of the OE reference

Control arm bushing

to fit

**Mercedes C-Class W/S 202, E-Class W/S 210,
CLK C/A 208, SLK R 170**



  Problem	 Solution 
Damage to rubber and rubber-metal bonding	<ul style="list-style-type: none"> • Increasing the stiffness • Redesign of the rubber geometry
Effect	Advantage
Loud noise and reduced driving and braking safety	<ul style="list-style-type: none"> • More comfort • Longer service life • Reduced wear