



## SENSOR, CAM/CRANKSHAFT

SENSORS | 11604

### FUNCTION

The camshaft sensor determines the exact position of the crankschaft mechanism and reports it to the engine control unit. The ignition and injection times can therefore be calculated. This information is required for functions such as initiating injection on sequential injection engines, the trigger signal for the magnet valve on pump valve injection systems and for cylinder-specific knock control. The camshaft sensor works according to the Hall effect and reads the camshaft sprocket. As the ring gear rotates, the sensor head registers the changing Hall voltage and sends it as well as the position of the camshaft to the control unit.



### SYMPTOMS

- Engine control unit operates in the emergency operation, at worst engine stall
- Engine control symbol lights up
- An error code is saved
- Increased fuel consumption



### CAUSES OF FAILURE

- Breakage or mechanical damage to the encoder wheel
- Contacting problems
- Temperature problems
- Internal short circuits
- Line short circuits



### ATTENTION

- The permissible tightening torque is max. 10Nm.
- The sensor is mounted by pushing it in (no slamming).
- There must be no forces acting on the plug or the ribs when using mechanical mounting aids.

### SENSOR, CRANKSHAFT PULSE



### VEMO ADVANTAGE

More than 670 Cam- an Crankshaft sensors on [www.autoteile.de](http://www.autoteile.de)

- protected by iSP foil
- safe installation due to vehicle specific coded plugs
- more than 50 refs in Q+ OE quality
- Made in Germany

Opel Agila, Astra, Corsa

X-Ref 9118368\*

**V40-72-0359**

# SENSOR, CAM/CRANKSHAFT

SENSORS | 11604

## SENSOR, CAMSHAFT POSITION



**Audi** A2  
**Škoda** Fabia  
**VW** Bora, Golf IV

X-Ref 030 907 601 C\* | **V10-72-1012**

## SENSOR, CRANKSHAFT PULSE



**Ford** Fiesta, Focus, Fusion

X-Ref 1 085 854\* | **V25-72-1064-1**

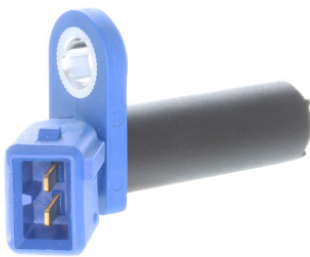
## SENSOR, CRANKSHAFT PULSE



**Mercedes-Benz** W163, W168, W202, S/W203

X-Ref 003 153 28 28\* | **V30-72-0111-1**

## SENSOR, CRANKSHAFT PULSE



**Ford** Fiesta IV, Fusion

X-Ref 1 110 834\* | **V25-72-0022**

## SENSOR, CAMSHAFT POSITION



**Nissan** Armada, Pathfinder, Sentra, Titan

X-Ref 23731-4M506\* | **V38-72-0019**

## SENSOR, CRANKSHAFT PULSE



**BMW** E36, E39

X-Ref 12 14 1 703 277\* | **V20-72-0402**

\* For detailed vehicle information, please refer to the vehicle lists under [www.autoteile.de](http://www.autoteile.de).

Notes: Temporary offers are only valid while stocks last. All offers remain subject to prior sale. Our general terms and conditions of sale and delivery as well as our warranty conditions apply, which are available for download on our website. All prices are net prices. Errors excepted. Reference numbers and names, with the exception of VIEROL AG, are for comparison only and may not be disclosed in invoices. They are non-binding and no indication of origin. © VIEROL AG