

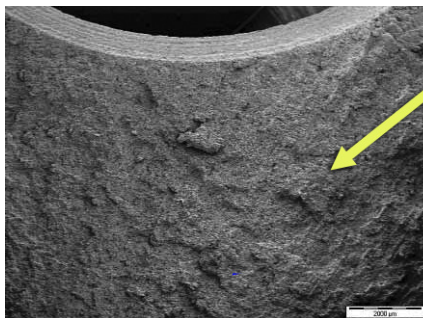
Cracked Wheel Cylinder Turret

Cracked wheel cylinder turret – following installation

From time to time we receive wheel cylinders returned under warranty with cracked cylinder turrets. Following laboratory examination it has been confirmed that in all cases this is due to over-tightening of the hydraulic pipe nut/hose. A simple visual examination of the cylinder port can also provide evidence of over-tightening. The illustration below shows clearly a circular witness mark in the base of the port confirming an excessive torque load has been applied.

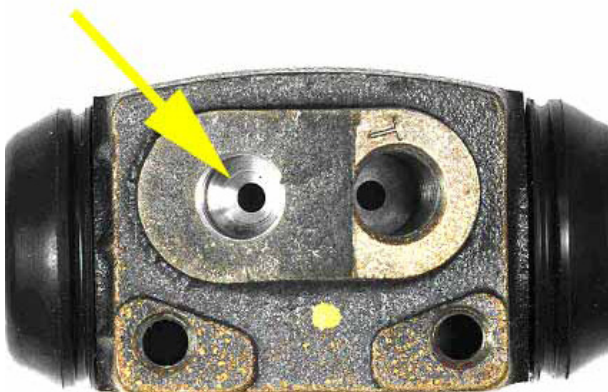
IMPORTANT: Always use the correct torque figure, specified by the vehicle manufacturer, when tightening hydraulic pipe nuts/hoses and bleedscrews.

Recommendation: Always fit hydraulic pipe nuts/hoses and bleedscrews by hand and finger tighten initially to prevent cross threading and subsequent damage to the cylinder. Use a suitable Torque wrench to tighten to the specified level.



Laboratory examination confirms no fault in the casting

Circular witness mark



Cracked turret

