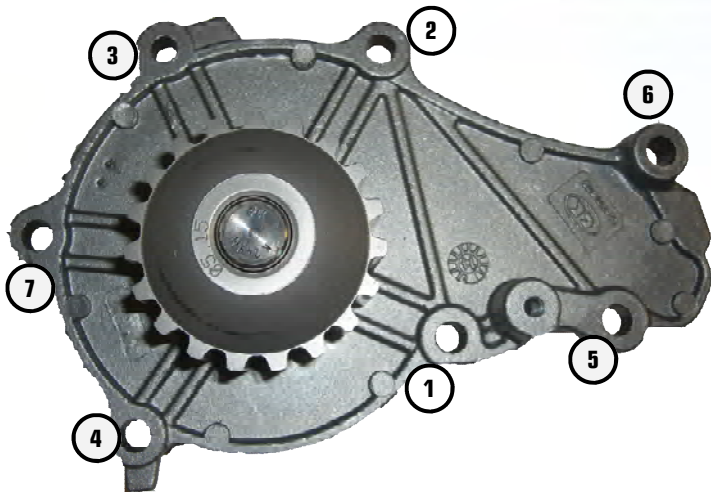


TECHNICAL INFORMATION

Water Pump 986803 - 986893



Affected vehicle:

CITROEN - FIAT - FORD - MAZDA - MINI

PEUGEOT - SUZUKI - VOLVO

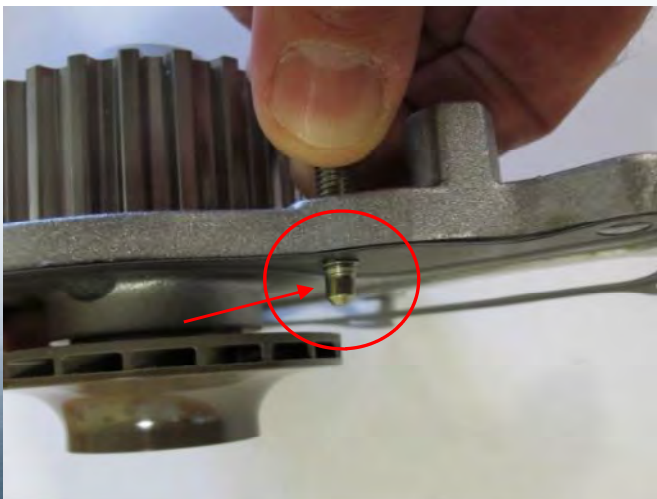
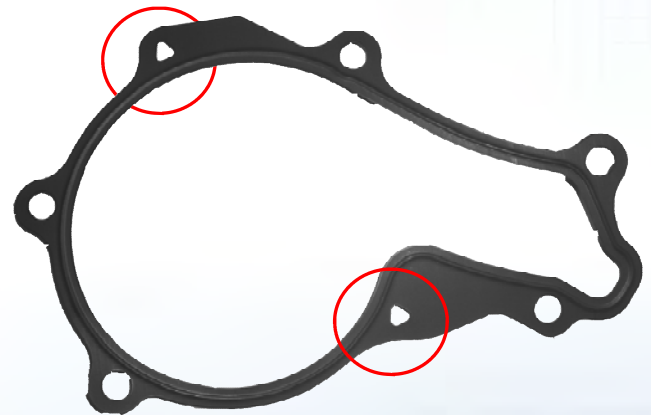
Engines: 1.4L 1.5L 1.6L Diesel

Good to know:

This water pump is mounted with a metal gasket towards the engine. For an easier positioning of the gasket, it is provided with two triangle-shaped holes (marks middle photo)

Installation instructions:

By means of two screws, the gasket is initially fixed to the pump housing (picture down). Thereafter, the assembly is made to the engine housing. First, all screws fasten finger tight. The tightening is done from inside out in two steps (photo above; torques see installation information)



Installation information:

Tightening torques:

Water Pump on engine housing	- Step 1	5 Nm
	- Step 2	10 Nm

Important note:

To sealing in addition to the supplied metal gasket no further sealant should be used. Otherwise there is the danger that sloughs excess sealant, and reaches inside the mechanical seal. This leads to the premature leak!