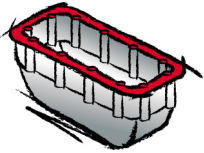
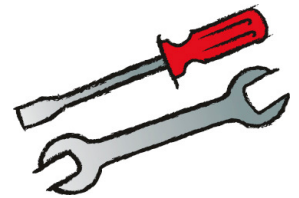


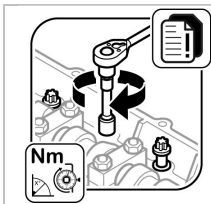


Das Original

TSI 10/11



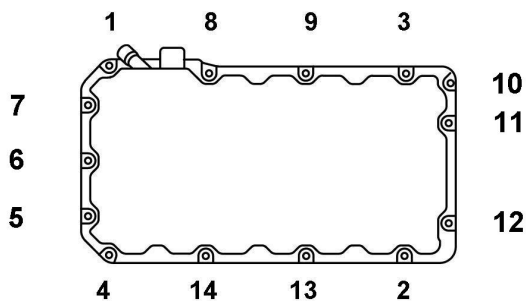
Mercedes-Benz OM 541.9 | 542.9



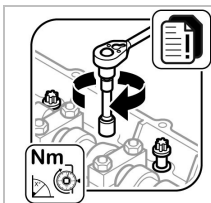
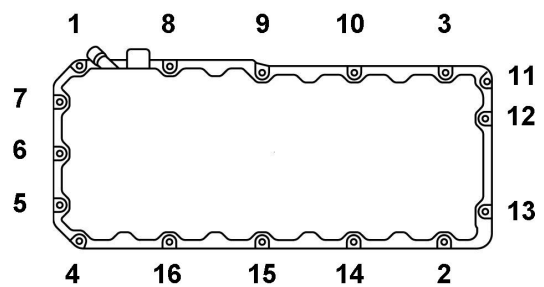
Light alloy | Thermoplastic material

55 Nm

Light alloy | Thermoplastic material OM 541.9:



Light alloy OM 542.9:

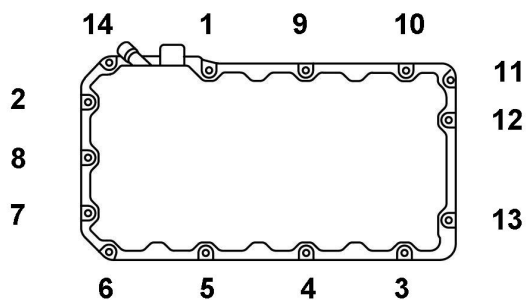


Thermoset material

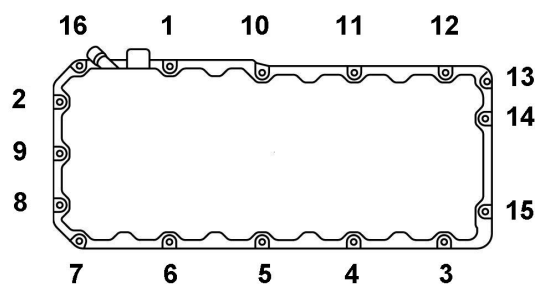
1. Level 10 Nm

2. Level 40 Nm

Thermoset material OM 541.9:

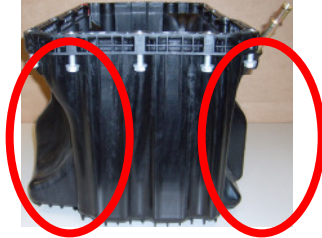


Thermoset material OM 542.9:

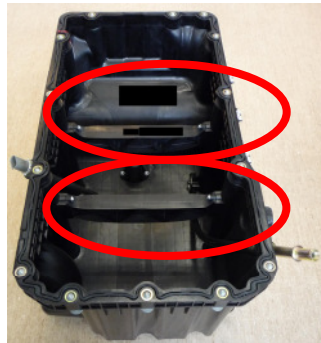


Oil pan Thermoplastic material

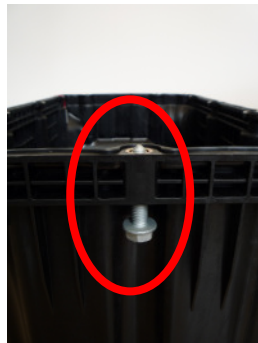
Identifying features:



- Concave shape.



- Reinforcements on the inside.



- No microencapsulated bolts. Therefore the threads in the crankcase, in the timing-gear case, and in the front housing cover do not have to be recut during disassembly and assembly.
- The bolts do not need to be replaced.